

**Framingham
Police
Department
Use of Force
End of Year 2020**

Use of Force Analysis 2020

TOTAL NUMBER OF CALLS FOR SERVICE: 41,394

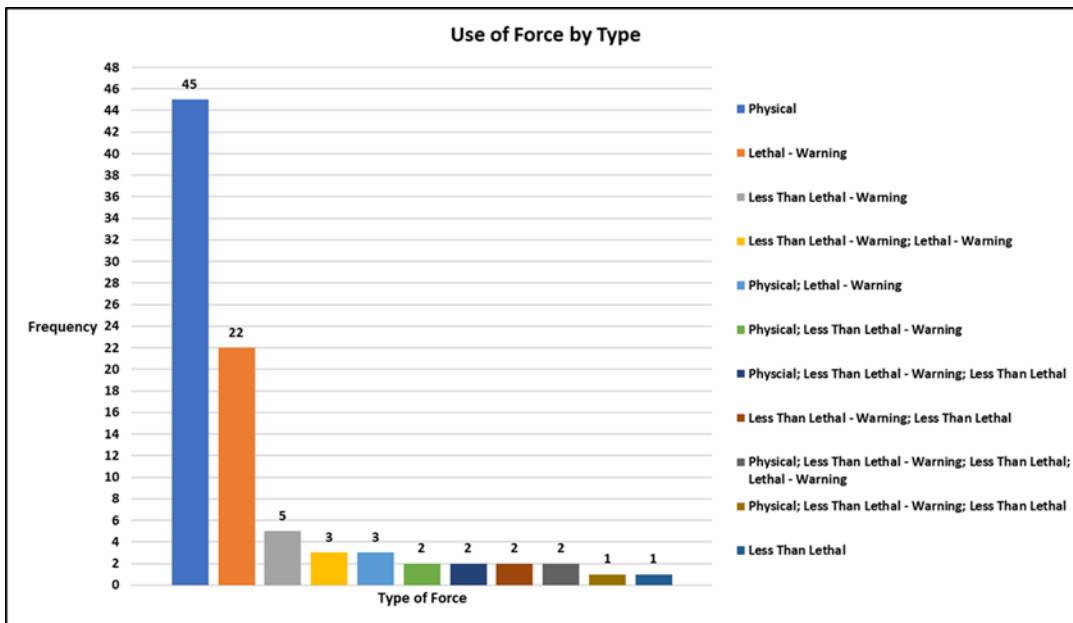
*TOTAL NUMBER OF CALLS WHERE FORCE WAS USED: 78

THIS NUMBER ACCOUNTS FOR 0.188% OF OVERALL CALLS
FOR SERVICE

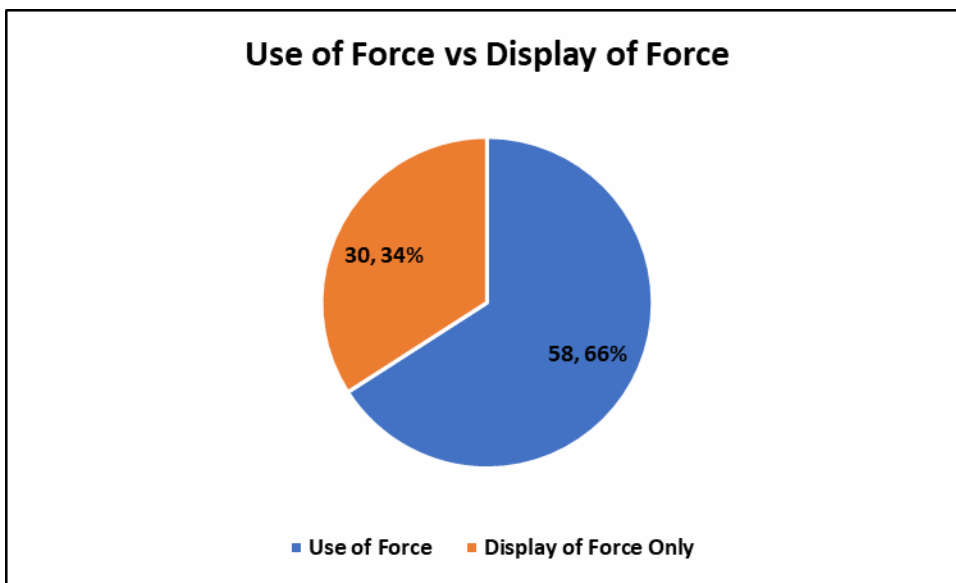
*NOTE: some calls had multiple people where force was
used against them. Therefore, there were a total of 88
individuals included in this analysis

Framingham Police Department
 Use of Force
 End of Year 2020

Between January 1st, 2020 and December 31st, 2020, there were 88 use of force incidents. Below is a breakdown demonstrating the combinations of types of force used by officers.

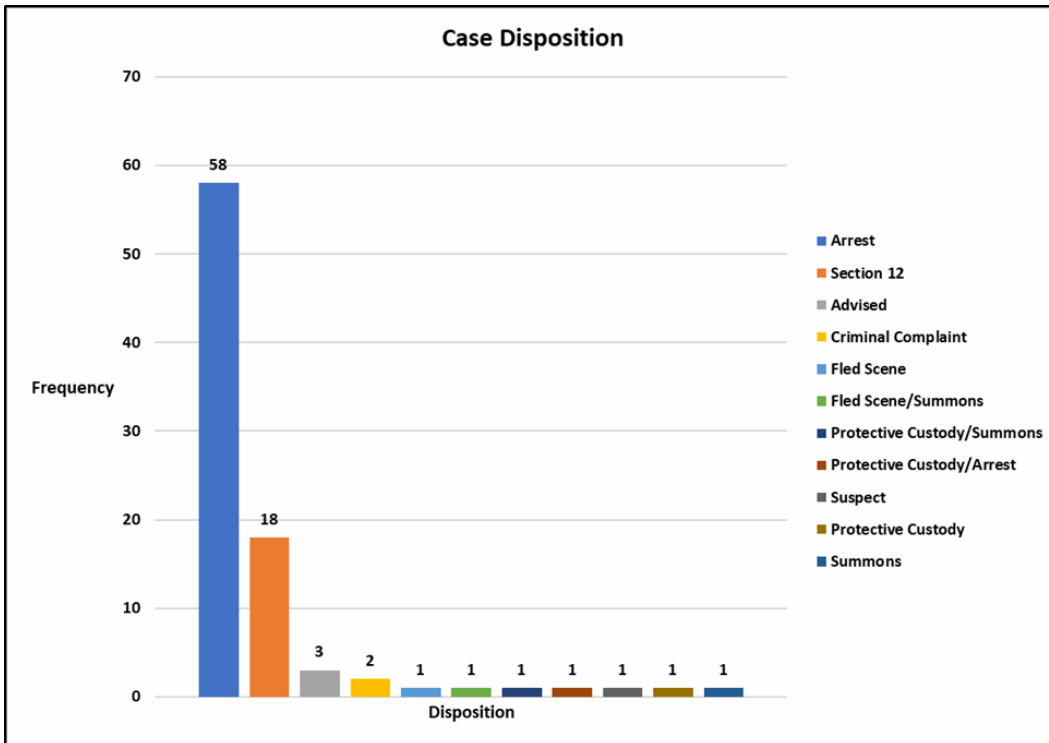


After further reviewing the use of force data, of the 88 incidents where force was reported, 30 of them were warnings only. The remaining 58 were incidents where force was actually used/deployed.

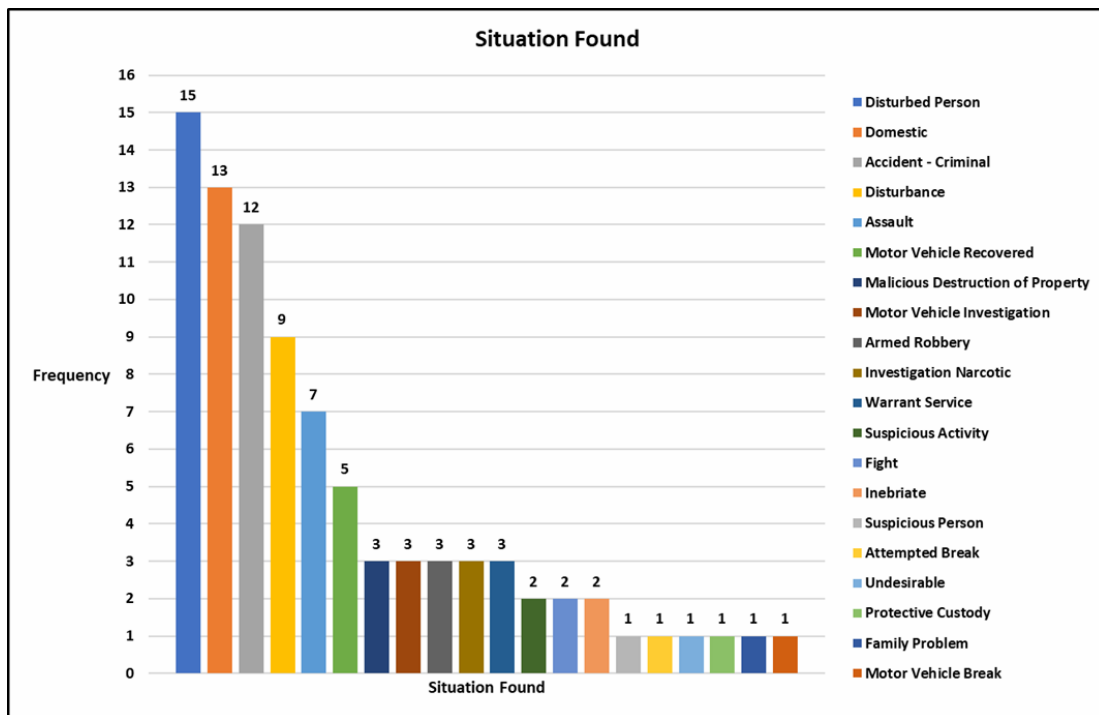


Framingham Police Department
Use of Force
End of Year 2020

The chart below displays the various case dispositions for each individual.

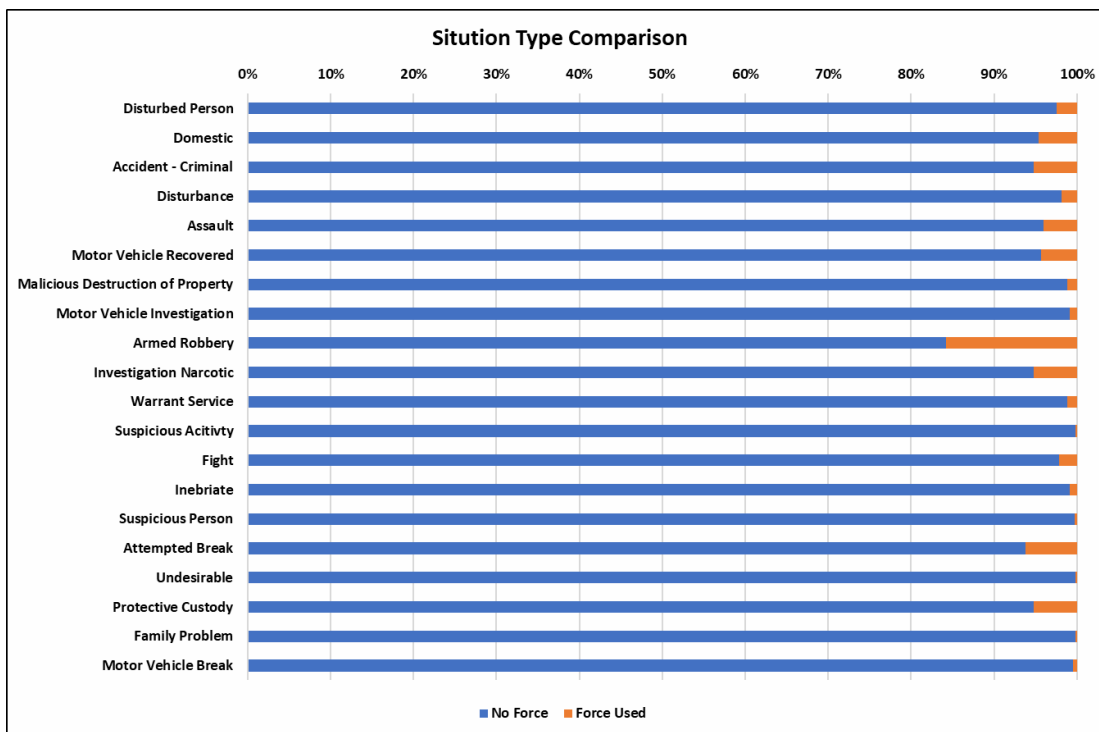


The chart below shows each call type for all 88 individuals where force was used against them.

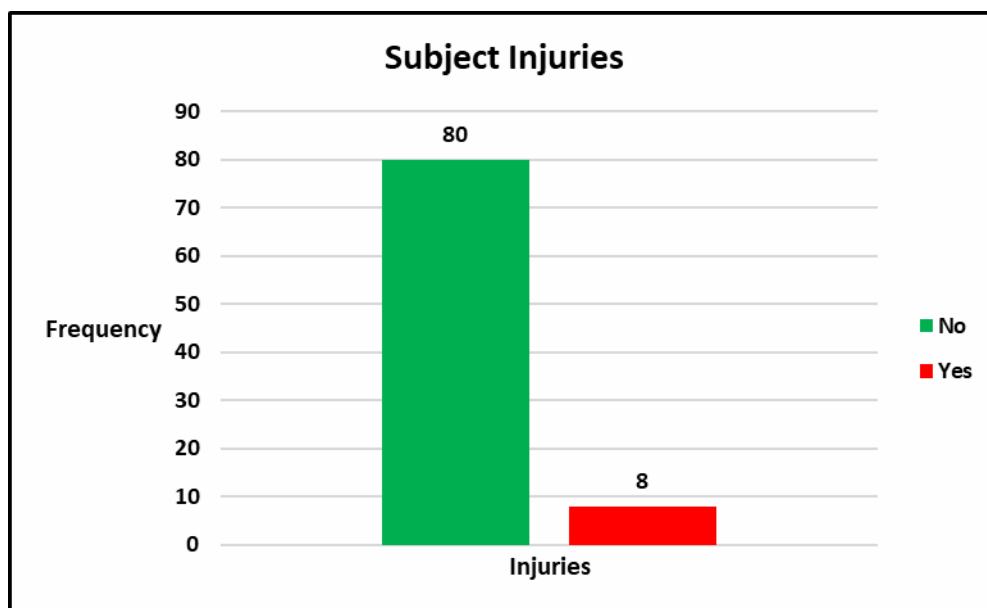


Framingham Police Department
 Use of Force
 End of Year 2020

The chart below displays the various call types in which force was used in comparison to the total number of each particular call type citywide for 2020.



The charts below display whether or not the individual that had force used against them sustained any injuries as a result of the force.



Framingham Police Department
Use of Force
End of Year 2020

The charts below outline use of force by race, Hispanic ethnicity, and sex.

